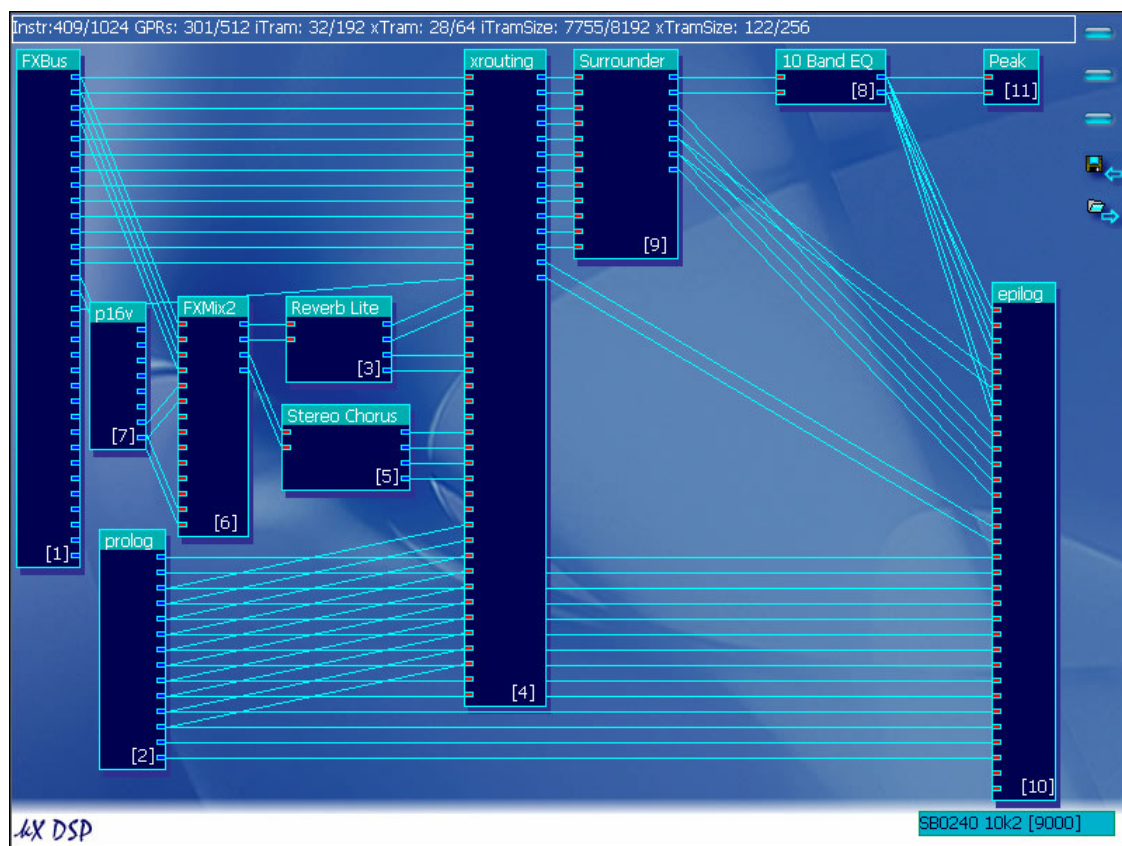




Configuring your Audigy 2 Platinum soundcard to use FinalScratch with DJDECKS without Pre-Amps.

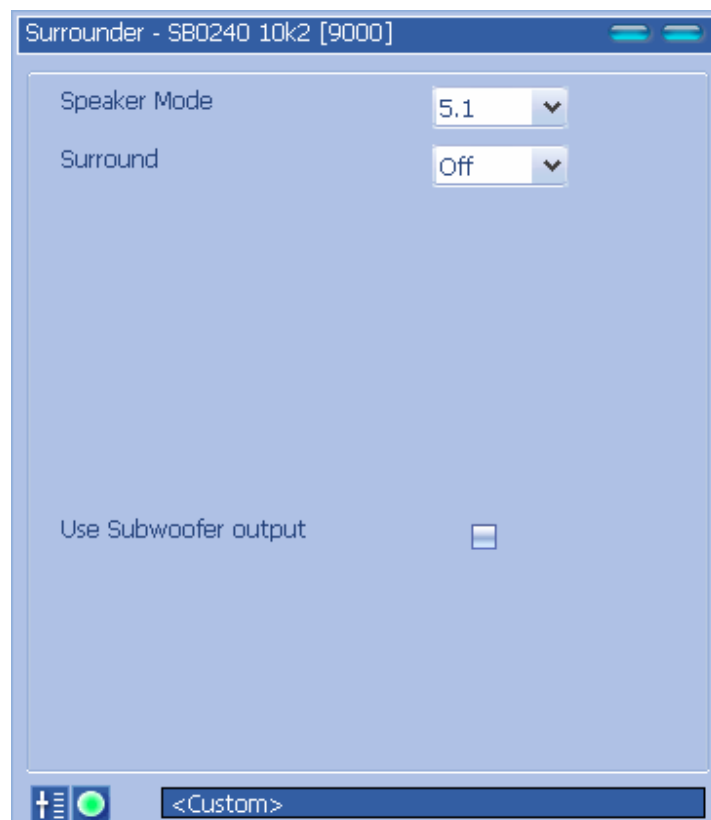
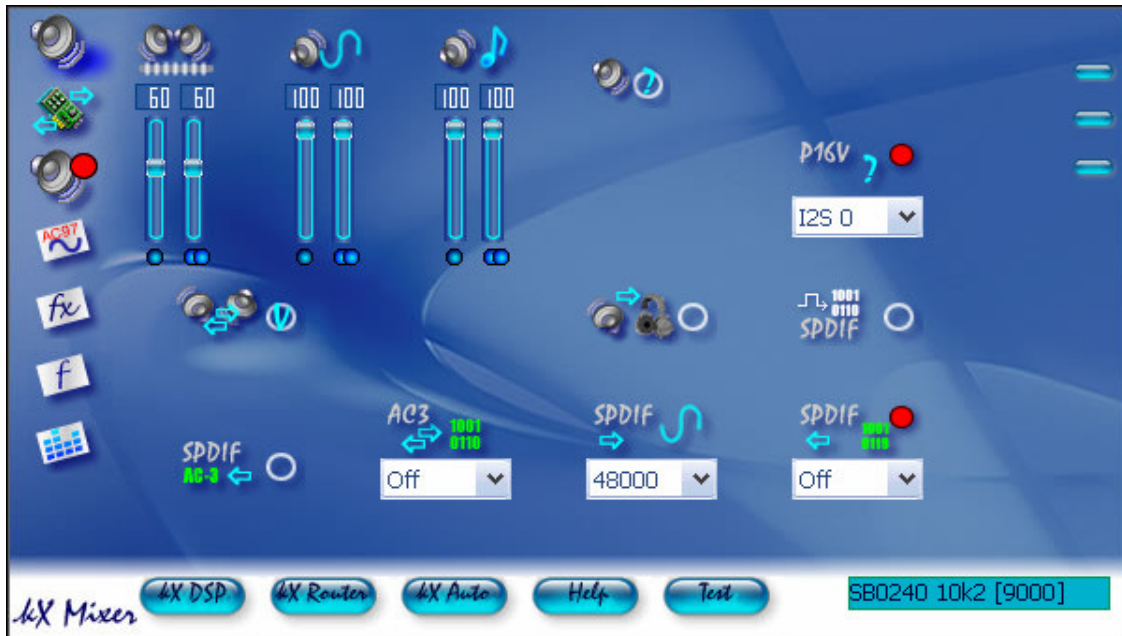
1) First of all get the KX drivers from <http://kxproject.lugosoft.com/down.php?language=en>. Install them and reboot your pc.

2) Then, you'll need to change some stuff in the KX drivers; Go to the "Kx DSP" window (right click the icon in the bottom-right corner of your screen and click "kX DSP"). You don't need to understand what the hell is going on in that window, just do this; remove the first two (0/1 = AC97 IN (LINE IN)) wires on the "PROLOG" box that are wired to the "XROUTING" box. Do the same with the last two (13/14 = AUX2 IN). **DON'T REMOVE THE CONNECTION OF THE WIRES TO THE EPILOG BOX.** Just remove the connections to the "XROUTING" box. After you are done it should look like this:



The screenshot displays the 4X Mixer software interface. The top section includes a 'Gain' control with a red indicator and a 'RESET' button. Below this, there are several sliders and buttons for 'LineIn', '3DSE', 'Boost', 'AUX', and 'Gain'. The bottom status bar shows '4X Mixer', '4X DSP', '4X Router', '4X Auto', 'Help', 'Test', and the system information 'SB0240 10k2 [9000]'.

5) One last thing; go to the main mixer window (press the speaker icon on the upper left corner of the mixer) and then click on the "speaker?" icon in the middle. Set speaker mode to 5.1 and surround OFF.



6) Now that you've got the software figured, go get some cables and link it all up. This is my setup:

TT1 -> LINE IN (ON THE BACK OF YOUR CARD) as follows:



TT2 -> AUX2 IN (ON THE FRONT CASE) as follows:



Then the routing back to the mixer (refer above):

LINE OUT (jack 2) -> MIXER CH1
SPK OUT (jack 1) -> MIXER CH2

Your sound then needs to be played somewhere:

MIXER OUT -> STEREO OR AMPLIFIER INPUT

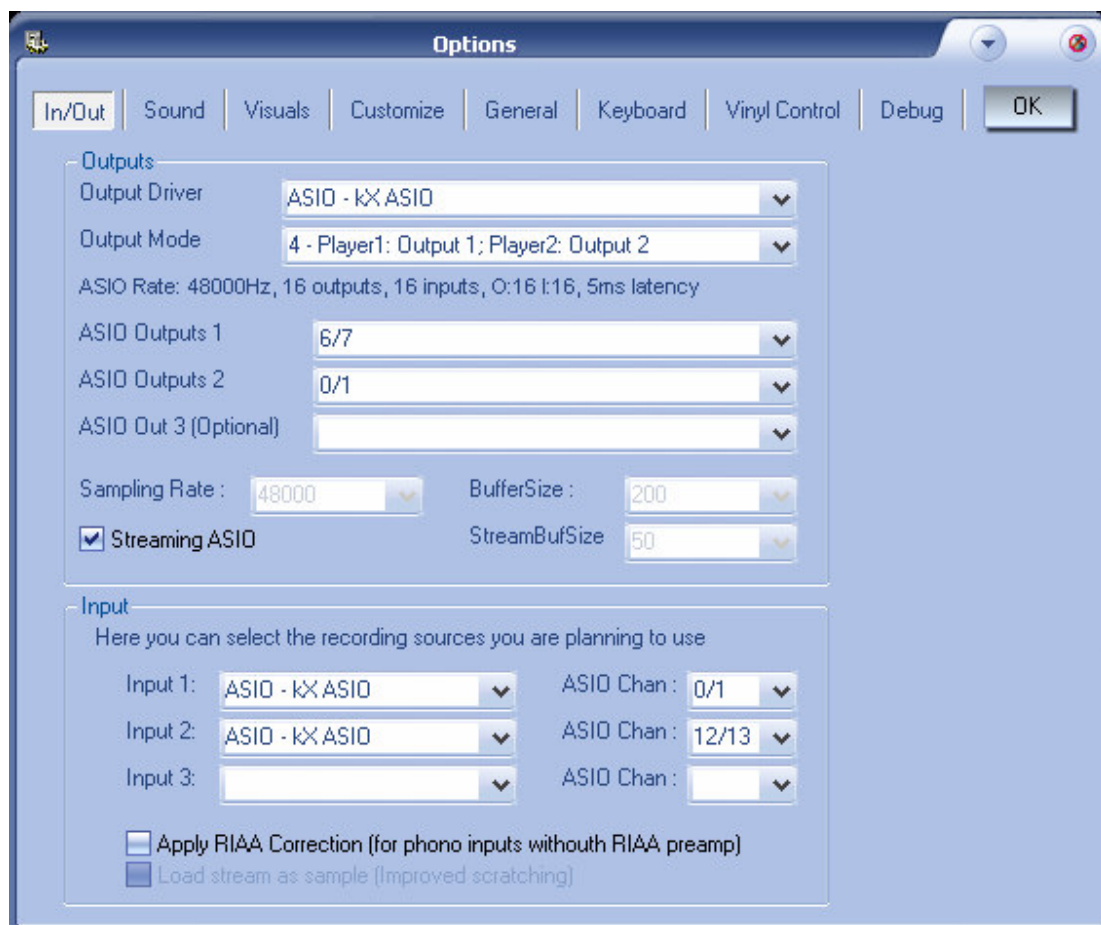
Make sure all cables WORK, cause the sound NEEDS to be stereo or it won't work correctly.

7) Now install the latest DjDecks beta as well as the final scratch vinyl control (both are available from here <http://www.djdecks.be/finalscratch/>).

8) Go to the "Options" menu and then the "In/Out" tab and put in these settings:

- Output Driver: "ASIO - kX ASIO"
- Output Mode: "4 - Player1: Output 1; Player2: Output 2"
- ASIO Outputs 1: "6/7"
- ASIO Outputs 2: "0/1"
- Input 1: "ASIO - kX ASIO" ASIO Chan: "0/1"
- Input 2: "ASIO - kX ASIO" ASIO Chan: "12/13"

Your screen should look like this:



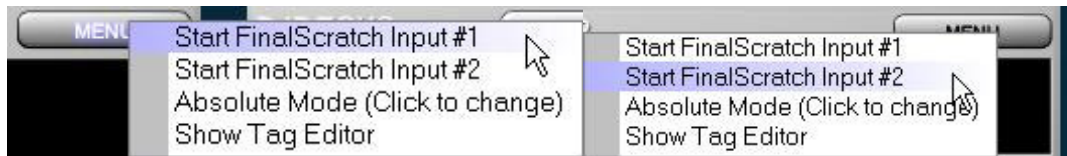
9) On the "Sound" tab you may wish to change the "Output" to "Mono" to reduce CPU usage as follows:



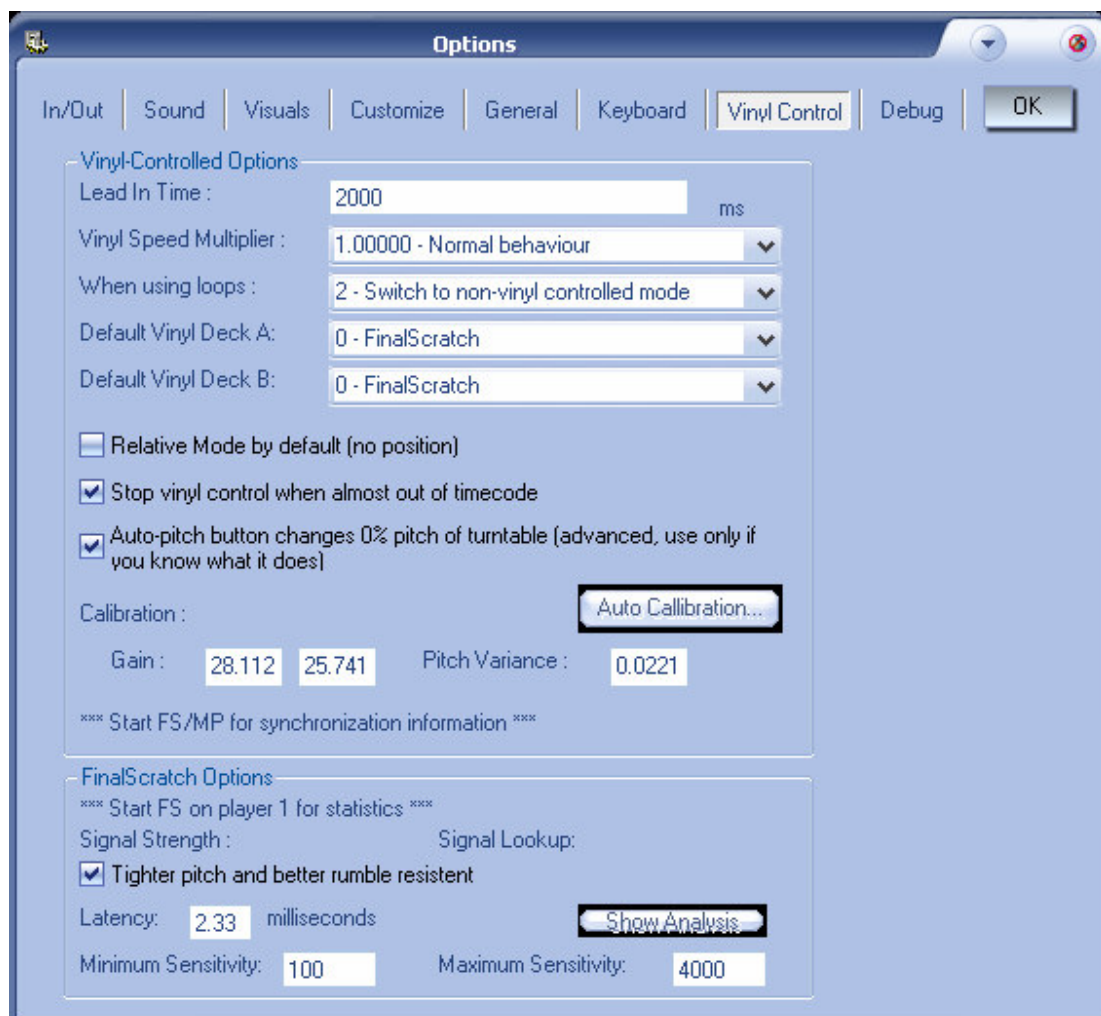
Now click on the "OK" button to close the options for now.

10) Now since you are not using preamps you will need to calibrate the volume levels of the input from the turntables. From the "Menu" button on each turntable, start the relevant FinalScratch:

("Start FinalScratch Input #1 on Player 1", and "Start FinalScratch Input #2" on Player 2)



Now go back to the "Option" menu and select the "Vinyl Control" tab. Set both of your turntables pitch to zero and start playing the time code. Now you can click the "Auto Calibration" button. All should go well and you will receive a confirmation message.



At this point you may also wish to tweak the "Minimum Sensitivity" to "100".

So this stuff should do the trick. It might happen that the song starts playing backwards, to resolve this swap your left and right RCA cables on the relevant input (front or back of your Creative Audigy card).

Hope this was helpful.

Scott Thompson.

